

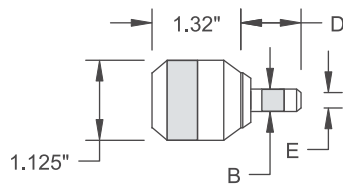
NOSE JAW SELECTION

SECTION 5

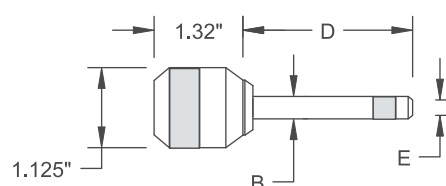
The Nose Jaw is an integral part of the System. The type of nose Jaw you select is application dependent. While the flat endform is standard, the recessed endform allows for high clamp up or can be used to deform a countersunk head into a dome head in order to capitalize on the benefits of SKU and Inventory reduction. The length and shape of the nose jaw is specifically designed to fit in limited access, hard to reach area's.



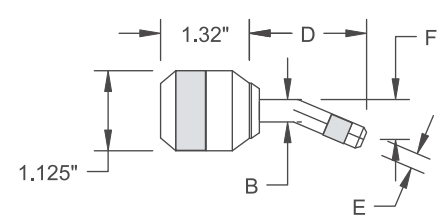
STANDARD NOSE



LONG NOSE

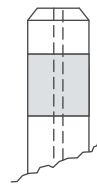


CURVED NOSE



Long	Part#	Nose Type & Form	Dimension		
			B	D	E
1/8"	Z-7150-3004	STANDARD FLAT	.41	1.18	.20
	Z-7170-3004	STANDARD RECESSED	.41	1.20	.30
	Z-7150-4004	LONG FLAT	.41	2.18	.20
	Z-7170-3204	LONG RECESSED	.41	2.18	.30
	Z-7150-5004	CURVED LONG FLAT	.41	2.22	.20
	Z-7170-3304	CURVED LONG RECESSED	.41	2.22	.30
5/32"	Z-7150-3005	STANDARD FLAT	.48	1.30	.24
	Z-7170-3005	STANDARD RECESSED	.48	1.32	.41
	Z-7150-4005	LONG FLAT	.48	2.30	.24
	Z-7170-3205	LONG RECESSED	.51	2.30	.41
	Z-7150-5005	CURVED LONG FLAT	.48	2.23	.24
	Z-7170-3305	CURVED LONG RECESSED	.51	2.23	.41
3/16"	Z-7150-3006	STANDARD FLAT	.56	1.18	.33
	Z-7170-3006	STANDARD RECESSED	.56	1.20	.47
	Z-7150-4006	LONG FLAT	.56	2.30	.33
	Z-7170-3206	LONG RECESSED	.56	2.30	.47
	Z-7150-5006	CURVED LONG FLAT	.56	2.21	.33
	Z-7170-3306	CURVED LONG RECESSED	.56	2.21	.47

FLAT END FORM



RECESSED END FORM

