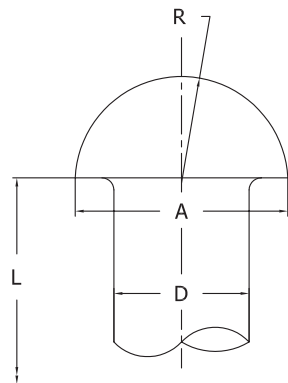
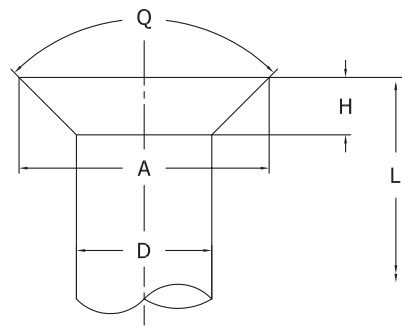


R&R Large Solid Rivets



BUTTON HEAD
 $A = 1.75 \times D$
 $H = 0.75 \times D$
 $R = 0.885 \times D$

DWG.28



FLAT COUNTERSUNK HEAD
 $A = 1.81 \times D$
 $H = 0.50 \times D$
 $Q = 78^\circ$

DWG.29

BUTTON HEAD

DIAMETER OF BODY 'D'			DIAMETER OF HEAD 'A'			HEIGHT OF HEAD 'H'		RADIUS OF HEAD 'R'	
NOMINAL	MAX.	MIN.	NOMINAL	MAX.	MIN.	MAX.	MIN.		
1/2	0.500	0.520	0.478	0.875	0.938	0.844	0.406	0.375	0.443
5/8	0.625	0.655	0.600	1.094	1.157	1.063	0.500	0.469	0.553
3/4	0.750	0.780	0.725	1.313	1.391	1.282	0.594	0.563	0.664
7/8	0.875	0.905	0.850	1.531	1.609	1.500	0.687	0.656	0.775
1	1.000	1.030	0.975	1.750	1.828	1.719	0.781	0.750	0.885

FLAT COUNTERSUNK HEAD

DIAMETER OF BODY 'D'			DIAMETER OF HEAD 'A'			DEPTH OF HEAD 'H'		RADIUS OF HEAD 'R'	
NOMINAL	MAX.	MIN.	NOMINAL	MAX.	MIN.	MAX.	MIN.		
1/2	0.500	0.520	0.478	0.905	0.936	0.874	0.281	0.250	78°
5/8	0.625	0.655	0.600	1.131	1.194	1.068	0.344	0.313	78°
3/4	0.750	0.780	0.725	1.358	1.421	1.295	0.406	0.375	78°
7/8	0.875	0.905	0.850	1.584	1.647	1.521	0.469	0.438	78°
1	1.000	1.030	0.975	1.810	1.873	1.747	0.531	0.500	78°

PRODUCT SPECIFICATIONS IN THIS CATALOGUE ARE THOSE IN EFFECT AT THE TIME OF PUBLISHING